

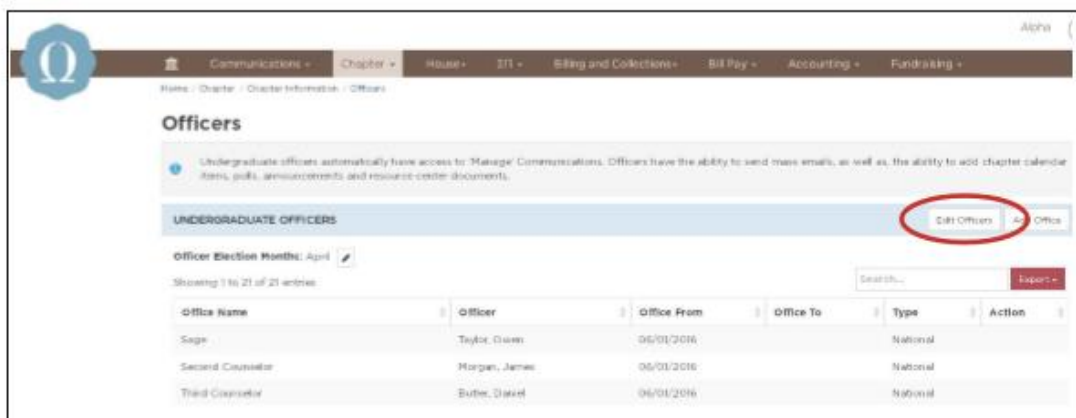
# Sigma Pi | Report New Officers in Vault

## How it Works

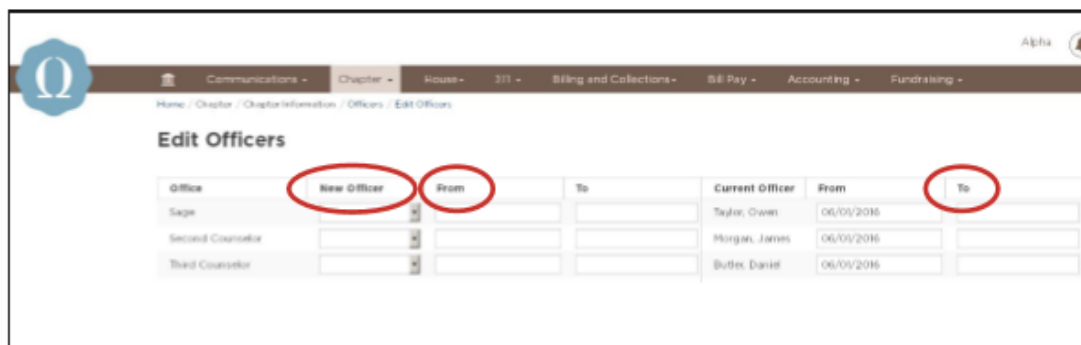
Report outgoing and incoming officers via [Vault](#) > Chapter > Officers.



### 1. Select 'Edit Officers'



### 2. In the first column select the new officers and add the date their term begins. Add a 'To' date to the last column indicating when the previous officer's term ended.



**For more information or with questions, contact:**

Your Chapter Services Representative at 800.276.6342 or Sigma Pi Executive Office at 615.921.2302